



PRODUCT SPECIFICATION

The USBN series is designed for ceiling surface mount cell lighting in medium, maximum and super max security detention facilities. The unique lens design maximizes efficiency fixture efficiency.

Mounting

Surface mounts to ceiling.

Lens

One piece vandal resistant prismatic polycarbonate inner lens with a one piece clear polycarbonate outer lens (if required).

Clamshell Housing

One piece, die-formed cold rolled steel with seams welded and ground smooth, 14 gauge lens retainers and our unique hinge-free system allowing the housing to be completely removed for ease of installation and servicing. Stainless steel available.

Back Plate

16 gauge die-formed cold rolled steel.

Finish

Polyester powder-coated after phosphate pretreatment for superior adhesion and corrosion resistance. Brushed stainless steel available.

Hardware

Recessed, stainless steel, tamper-proof fasteners.

Certifications

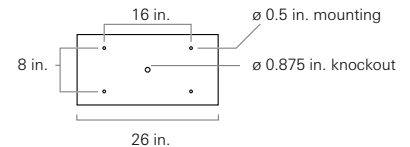
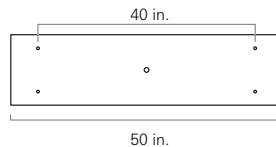
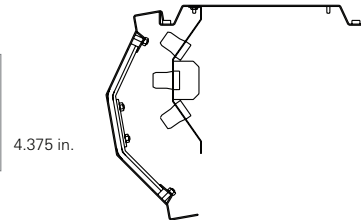
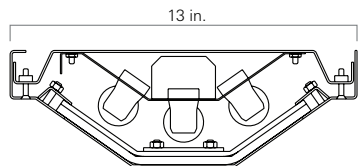
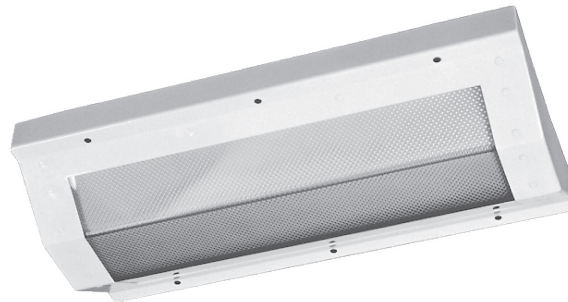
UL Listed damp location. Covered ceilings only.

Job Name _____

Fixture Type _____

Catalog No. _____

Approval _____ Date _____



one Lamps (not included)

- 14 2 ft. 14 W T5
- 17 2 ft. 17 W T8
- 24 2 ft. 24 W T5 HO
- 4B 2 ft. 40 W T5 RS biax
- 28 4 ft. 28 W T5
- 32 4 ft. 32 W T8
- 54 4 ft. 54 W T5 HO

two Housing Gauge

- N 18 gauge, minimum security
- D 16 gauge, medium security
- X 14 gauge, maximum security
- U 12 gauge, super max, CRS only

three Housing Material

- C Cold rolled steel
- S Stainless steel

four Finish

- R Brushed stainless steel
- W White

five Voltage

- 120 120 V, 60 Hz
- 277 277 V, 60 Hz
- 347 347 V, 60 Hz
- VAR Variable, 120-277 V, 50/60Hz

six Ballast

- DM Dimming
- EL Electronic Instant Start, std T8
- PR Program Rapid Start, std T5, option T8

seven Internal Lens

- 15 .156 in. K12 prismatic polycarbonate
- 16 .187 in. K12 prismatic polycarbonate

eight External Lens

- 30 .187 in. clear polycarbonate
- 32 .250 in. clear polycarbonate
- 36 .375 in. clear polycarbonate

nine Fasteners

- AP Stainless steel allen head with pin
- TP Stainless steel torx head with pin
- PH Phillips, non-security

ten Electrical Access

- A 2.250 in. diameter access hole
- K 0.875 in. diameter knockout(s), std

eleven Options

- 2C Two-circuit wired
- CU Canadian UL Listing
- E1 One lamp emergency ballast
- E2 Two lamp emergency ballast
- FH Fuse and holder
- NL Night light, for 7 or 9 W PL bipin
- NL-LED Night light, LED
- IMS Integral Occ Sensor

Modifications are available to meet custom requirements.