



SWD-LED

High Abuse Surface Mount **LED** Linear

PRODUCT SPECIFICATION

The SWD series is designed for general purpose lighting in high abuse environments.

Mounting

Surface mounts to ceiling. Knockouts on both ends permit continuous fixture mounting.

Lens

One piece, vandal resistant, .156 in., extruded, UV stabilized, prismatic polycarbonate lens.

Housing

16 gauge cold rolled steel, die-formed to shape with seams welded and ground smooth. Additional gauges, aluminum and stainless steel available.

Finish

Polyester powder-coated after phosphate pretreatment for superior adhesion and corrosion resistance. Brushed stainless steel available.

Hardware

Stainless steel, tamper-proof fasteners.

Driver

0-10Vdc dimming, Range 10%-100%
-40°C Min. starting temperature, >0.9 PF, <20% THD

Wiring

Driver provided with pre-wired 3-wire self-aligning input power quick disconnect and 2-wire quick disconnect to LED module.

Certifications

UL Listed damp or wet location. Covered ceilings only. IP43 rated.

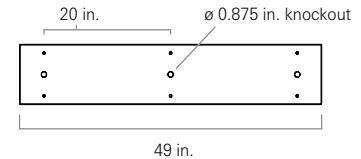
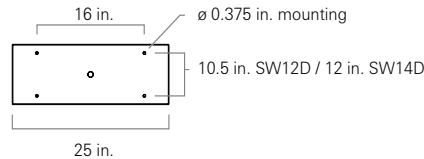
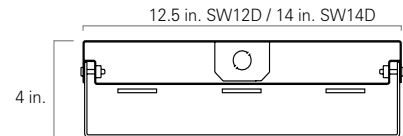
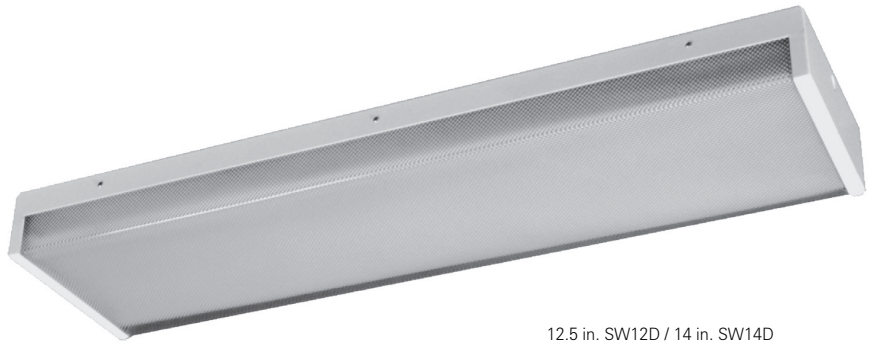
Job Name _____

Fixture Type _____

Catalog No. _____

Approval _____

Date _____



SW	one	two	-	three	four	five	six	-	seven	eight	-	nine	-	15	-	eleven	-	twelve	thirteen
----	-----	-----	---	-------	------	------	-----	---	-------	-------	---	------	---	----	---	--------	---	--------	----------

one Fixture Width

- 12D 12.5 in. width
- 14D 14 in. width

two Luminaire Size

- 2 2 ft. fixture
- 4 4 ft. fixture

three LED Rows

- 1L One
- 2L Two
- 3L Three

four Color Temperature

- 35 3500K
- 40 4000K
- 50 5000K

five Material Gauge

- N 18 gauge, minimum security
- D 16 gauge, medium security, std
- X 14 gauge, maximum security

six Material

- A Aluminum
- C Cold rolled steel, std
- S Stainless steel

seven Finish

- R Brushed stainless steel
- W White

eight Voltage

- 120 120 V, 60 Hz
- 277 277 V, 60 Hz
- VAR Variable, 120-277 V, 50/60Hz

nine Driver

- DM 0-10VDC Dimming, standard

ten Lens

- 15 .156 in. polycarbonate K12 prismatic

eleven Fasteners

- AP Stainless steel allen head with pin
- TP Stainless steel torx head with pin
- PH Phillips, non-security

twelve UL Listing

- D Damp location
- W Wet location

thirteen Options

- SO Specified output*
- 2C Two-circuit wired
- CU Canadian UL Listing
- EM Emergency battery backup
- FH Fuse and holder
- NL-LED Night light, LED

* Indicated as SO(xx/xxxx). Specified output, Input watts / delivered lumens to be determined based on specified requirements

Modifications are available to meet custom requirements.