



PRODUCT SPECIFICATION

The SWD series is designed for general purpose lighting in high abuse environments.

**Mounting**

Surface mounts to ceiling. Knockouts on both ends permit continuous fixture mounting.

**Lens**

One piece, vandal resistant, .156 in., extruded, UV stabilized, prismatic polycarbonate lens.

**Housing**

16 gauge cold rolled steel, die-formed to shape with seams welded and ground smooth. Additional gauges, aluminum and stainless steel available.

**Finish**

Polyester powder-coated after phosphate pretreatment for superior adhesion and corrosion resistance. Brushed stainless steel available.

**Hardware**

Stainless steel, tamper-proof fasteners.

**Certifications**

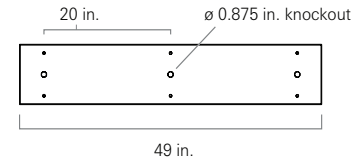
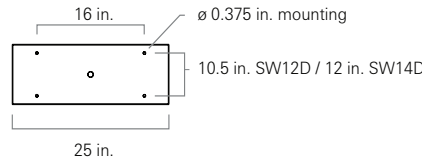
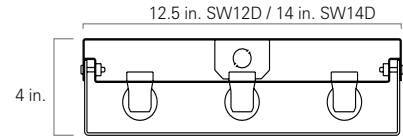
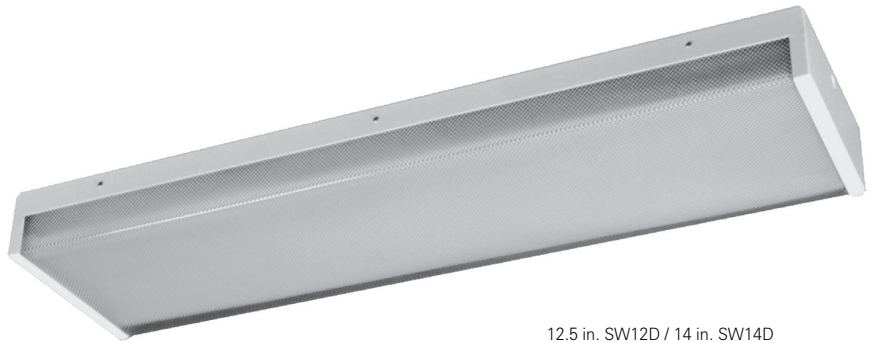
UL Listed damp or wet location. Covered ceilings only.

Job Name \_\_\_\_\_

Fixture Type \_\_\_\_\_

Catalog No. \_\_\_\_\_

Approval \_\_\_\_\_ Date \_\_\_\_\_



SW	one	two	three	four	five	six	seven	eight	15	nine	ten	eleven	twelve
----	-----	-----	-------	------	------	-----	-------	-------	----	------	-----	--------	--------

**one Fixture Width**  
 12D 12.5 in. width  
 14D 14 in. width

**two Lamps (not included)**  
 14 2 ft. 14 W T5  
 17 2 ft. 17 W T8  
 24 2 ft. 24 W T5 HO  
 4B 2 ft. 40 W T5 RS biax  
 28 4 ft. 28 W T5  
 32 4 ft. 32 W T8  
 54 4 ft. 54 W T5 HO

**three Lamp Quantity**  
 2 two  
 3 three  
 4 four

**four Material Gauge**  
 N 18 gauge, minimum security  
 D 16 gauge, medium security, std  
 X 14 gauge, maximum security

**five Material**  
 A Aluminum  
 C Cold rolled steel, std  
 S Stainless steel

**six Finish**  
 R Brushed stainless steel  
 W White

**seven Voltage**  
 120 120 V, 60 Hz  
 277 277 V, 60 Hz  
 347 347 V, 60 Hz  
 VAR Variable, 120-277 V, 50/60Hz

**eight Ballast**  
 DM Dimming  
 EL Electronic Instant Start, std T8  
 PR Program Rapid Start, std T5, option T8

**nine Lens**  
 15 .156 in. polycarbonate K12 prismatic

**ten Fasteners**  
 AP Stainless steel allen head with pin  
 TP Stainless steel torx head with pin  
 PH Phillips, non-security

**eleven UL Listing**  
 D Damp location  
 W Wet location

**twelve Options**  
 2C Two-circuit wired  
 CU Canadian UL Listing  
 E1 One lamp emergency ballast  
 E2 Two lamp emergency ballast  
 FH Fuse and holder  
 NL Night light, for 7 or 9 W PL bipin  
 NL-LED Night light, LED

Modifications are available to meet custom requirements.