



SGB-LED

Security Surface Mount **LED** Wall

PRODUCT SPECIFICATION

The SGB series with built in shelf is designed for use in all levels of security facilities and high abuse applications.

Mounting

Surface mounts to wall.

Housing

Die-formed cold rolled steel with seams welded and ground smooth. Stainless steel available.

Door

One piece, die-formed cold rolled steel door with 14 gauge lens retainers and a full length welded pin piano hinge. Stainless steel available.

Internal Lens

Optic Plus lens (standard) completely hides diode image while providing minimum 95% light transmission.

Finish

Polyester powder-coated after phosphate pre-treatment for superior adhesion and corrosion resistance. Brushed stainless steel available.

Hardware

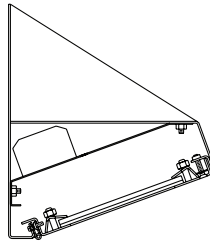
Recessed, stainless steel, tamper-proof fasteners.

Driver

0-10Vdc dimming, Range 10%-100%
-40°C Min. starting temperature, >0.9 PF, <20% THD.

Wiring

Driver provided with pre-wired 3-wire self-aligning input power quick disconnect and 2-wire quick disconnect to LED module.

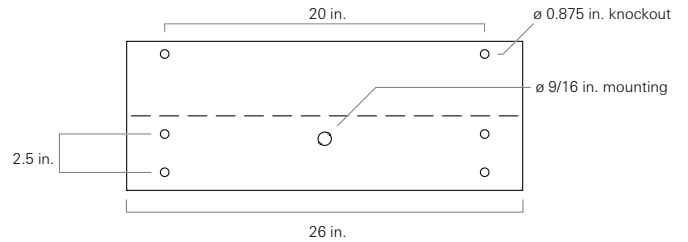
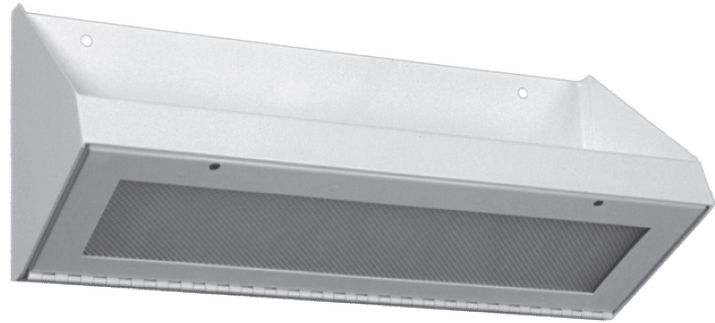


Job Name _____

Fixture Type _____

Catalog No. _____

Approval _____ Date _____



Certifications

UL Listed damp or wet location. IP34 rated. Covered ceilings only.



SGB	one	two	three	four	five	six	seven	eight	nine	ten	eleven	twelve	thirteen
-----	-----	-----	-------	------	------	-----	-------	-------	------	-----	--------	--------	----------

one	Luminaire Size	seven	Voltage	eleven	Door Fasteners
2	2 ft fixture	120	120 V, 60 Hz	AP	Stainless steel allen head with pin
two	LED Rows	277	277 V, 60 Hz	TP	Stainless steel torx head with pin
1L	One	VAR	Variable, 120-277 V, 50/60Hz	PH	Phillips, non-security
2L	Two	eight	Driver	twelve	UL Listing
three	Color Temperature	DM	0-10Vdc Dimming, <u>standard</u>	D	Damp Location
35	3500K	nine	Internal Lens	W	Wet Location
40	4000K	122	Optic Plus LED diffusing acrylic lens, <u>std</u>	thirteen	Options
50	5000K	53	.125 in. K12 prismatic acrylic	SO	Specified output*
four	Material Gauge	12	.125 in K12 prismatic polycarbonate	2C	Two-circuit wired
N	18 gauge, minimum security	15	.156 in. K12 prismatic polycarbonate	CU	Canadian UL Listing
D	16 gauge, medium security	16	.187 in. K12 prismatic polycarbonate	EM	Emergency battery backup
X	14 gauge, maximum security	75	.156 in. C73 prismatic tempered glass	FH	Fuse and holder
five	Material	ten	External Lens	NL-LED	Night light, LED
C	Cold rolled steel	30	.187 in. clear polycarbonate	IMS	Integral Occ Sensor
S	Stainless steel	32	.250 in. clear polycarbonate	PS	Security push on/off switch
six	Finish	36	.375 in. clear polycarbonate		
R	Brushed stainless steel	38	.500 in. clear polycarbonate		
W	White	90	.187 in. clear tempered glass		
		92	.250 in. clear tempered glass		
		96	.375 in. clear tempered glass		

* Indicated as SO(xx/xxxx). Specified output, Input watts / delivered lumens to be determined based on specified requirements

Modifications are available to meet custom requirements.