



PRODUCT SPECIFICATION

The SGB series with built in shelf is designed for use in all levels of security facilities and high abuse applications.

Mounting

Surface mounts to wall.

Housing

Die-formed cold rolled steel with seams welded and ground smooth. Stainless steel available.

Door

One piece, die-formed cold rolled steel door with 14 gauge lens retainers and a full length welded pin piano hinge. Stainless steel available.

Finish

Polyester powder-coated after phosphate pre-treatment for superior adhesion and corrosion resistance. Brushed stainless steel available.

Hardware

Recessed, stainless steel, tamper-proof fasteners.

Wiring

All electrical components are reflector-mounted for easy wiring and maintenance.

Certifications

UL Listed damp or wet location. Covered ceilings only.

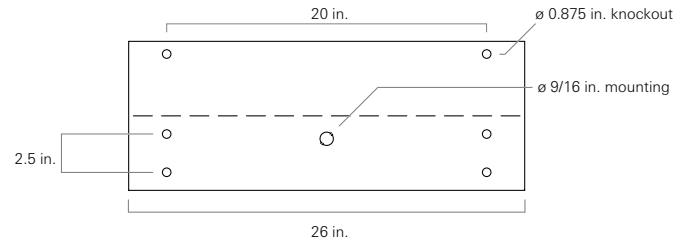
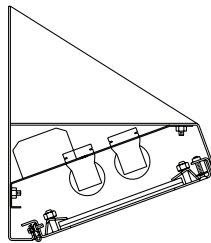
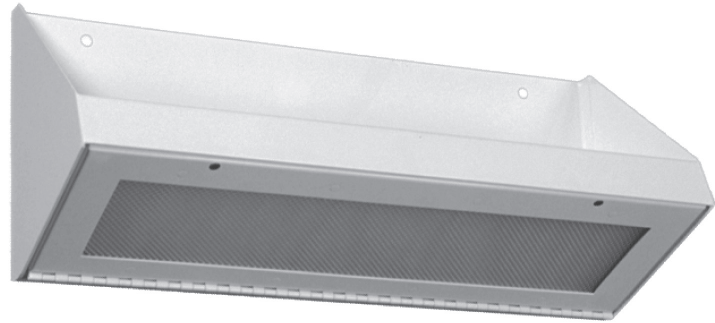
Job Name _____

Fixture Type _____

Catalog No. _____

Approval _____

Date _____



SGB	one	two	-	three	four	five	-	six	seven	-	eight	/	nine	-	ten	eleven	-	twelve
-----	-----	-----	---	-------	------	------	---	-----	-------	---	-------	---	------	---	-----	--------	---	--------

one Lamps (not included)

- 14 2 ft. 14 W T5
- 17 2 ft. 17 W T8
- 24 2 ft. 24 W T5 HO
- 4B 2 ft. 40 W T5 biax

two Lamp Quantity

- 1 one
- 2 two

three Material Gauge

- N 18 gauge, minimum security
- D 16 gauge, medium security
- X 14 gauge, maximum security

four Material

- C Cold rolled steel
- S Stainless steel

five Finish

- R Brushed stainless steel
- W White

six Voltage

- 120 120 V, 60 Hz
- 277 277 V, 60 Hz
- 347 347 V, 60 Hz
- VAR Variable, 120-277 V, 50/60Hz

seven Ballast

- DM Dimming
- HO Electronic Instant Start, std T8
- PR Program Rapid Start, std T5, option T8

eight Internal Lens

- 53 .125 in. K12 prismatic acrylic
- 12 .125 in. K12 prismatic polycarbonate
- 15 .156 in. K12 prismatic polycarbonate
- 16 .187 in. K12 prismatic polycarbonate
- 75 .156 in. C73 prismatic tempered glass
- 01 .005 in. UV absorbing overlay

nine External Lens

- 30 .187 in. clear polycarbonate
- 32 .250 in. clear polycarbonate
- 36 .375 in. clear polycarbonate
- 38 .500 in. clear polycarbonate
- 90 .187 in. clear tempered glass
- 92 .250 in. clear tempered glass
- 96 .375 in. clear tempered glass

ten Door Fasteners

- AP Stainless steel allen head with pin
- TP Stainless steel torx head with pin
- PH Phillips, non-security

eleven UL Listing

- D Damp Location
- W Wet Location

twelve Options

- 2C Two-circuit wired
- CU Canadian UL Listing
- E1 One lamp emergency ballast
- E2 Two lamp emergency ballast
- FH Fuse and holder
- NL Night light, for 7 or 9 W PL bipin
- NL-LED Night light, LED
- IMS Integral Occ Sensor
- PS Security push on/off switch

Modifications are available to meet custom requirements.