

US NAVY MIL SPEC LIGHTING

MIL-F-16377/6 Overhead Directional Lighting

The L.C. Doane Company

202CP Series, 2 Lamp Fixture

The 202CP Series is a watertight fluorescent lighting fixture for vertical panel board lighting. The housing is constructed from marine grade aluminum. Available with a clear and white prismatic 1/4" thick window.

120 volts, 60 Hertz. Supplied with two 8W T5 cool white lamps and ten feet of cable.

Standard Mounting

Overall Dimensions: 16-5/16 X 7-5/8" X 3-1/2".

Net weight: 7 lbs. 8 oz. maximum.

Approximate shipping weight for package of eight: 65 lbs.

Flush Mounting

Overall Dimensions: 18-11/16" X 9-15/16" X 3-1/2".

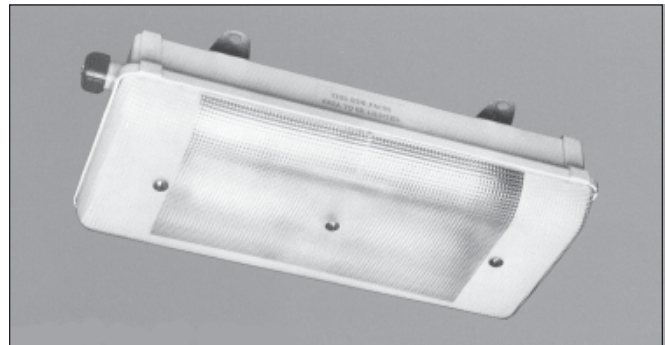
Net weight: 8 lbs. 12 oz. maximum.

Approximate shipping weight for package of eight: 76 lbs.

How To Order By Military Spec Number

Example: M16377/6-149.4 (Refer to the Index pages for crosses to NSN numbers)

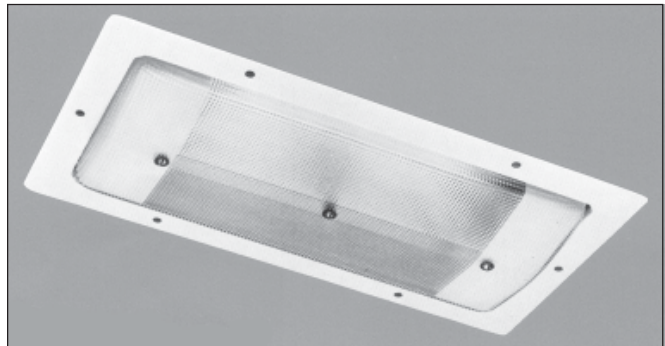
M16377/6				
MIL SPEC NUMBER	SYMBOL NUMBER	OPTIONAL (EACH) LAMP FILTER TUBE	OPTIONAL SWITCH (DPST)	OTHER OPTION Specify
	149.4 = Standard Mount	R = Red	S = One Switch	A2 = Amendment 2, Low Smoke Cable
	149.5 = Flush Mount	B = Blue	SS = Two Switches	
		Y = Amber		
		G1.0 = Grey 1.0%		
		G2.5 = Grey 2.5%		



M16377/6-149.4

NSN 6210-00-548-0226

Standard Mount, Clear/White Prismatic Window



M16377/6-149.5

NSN 6210-01-339-7007

Flush Mount, Clear/White Prismatic Window

On Board Repair Parts For MIL-F-16377/6, 2 Lamp Fixtures

For other available on board repair parts refer to the Repair Parts page.

ITEM DESCRIPTION	L.C. DOANE PART NUMBER	MILITARY NUMBER	NSN NUMBER
CLEAR/WHITE PRISMATIC WINDOW	B-1719-NS	M16377/6-002	
SHOCKMOUNT	B-1591-AS	M16377/41-010	6210-00-973-1748



THE L.C. DOANE COMPANY DESIGNERS AND MANUFACTURERS OF SPECIALIZED LIGHTING EQUIPMENT

Ivoryton, CT 06442 • (860) 767-8295 • Fax (860) 767-1397 • Web Site: www.lcdoane.com

Rev J